



## **FORT VALE** **Safeload Range**

Fuel transfer equipment for  
road loading terminals.





# Introduction

Fort Vale Engineering Ltd. was founded in 1967 by E.S. Fort OBE, who developed a range of control valves and nozzles for the domestic fuel oil delivery industry.

The company has since grown to become the world leader in the design and manufacture of a vast range of valves, manways and fittings for liquid and gas tank containers, road tankers and rail cars. Our **Safeload** range of fuel transfer equipment for road loading terminals was established over 20 years ago and continues to evolve and expand.

Our headquarters and manufacturing facility is in Burnley, U.K. and we have 6 subsidiary companies strategically located around the world to provide spare parts, after-sales customer care and product support.

### UK Accreditations

- ISO 9001:2008 Quality Management Systems
- OHSAS 18001:2007 Health & Safety Management Systems
- ISO 3834-2:2005 Welding Quality Assurance
- PED Module D & H, Conformance to ATEX, ASME code stamp accredited facility (U)



*'The Fort Vale Safeload Coupler is the best on the market. To anyone buying couplers, I'd recommend Fort Vale before any other brands - it's simple but effective design benefits safety and keeps maintenance requirements to a minimum.'*

**Jonathan Doherty, LSS Oil**





## Overview

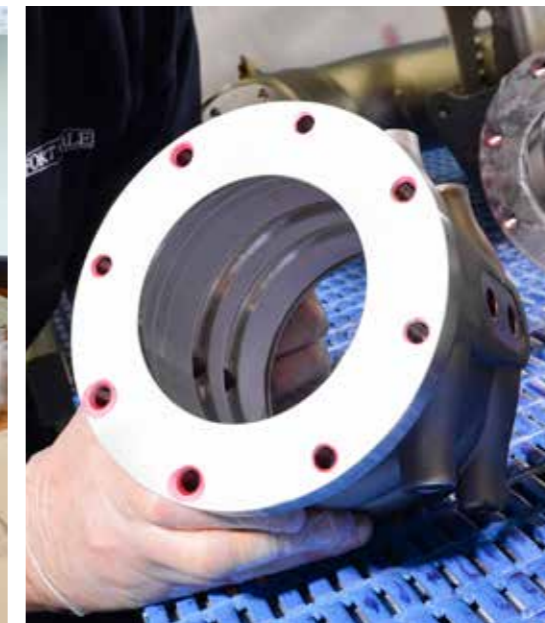
Fort Vale is internationally recognised for setting standards in a safety-critical industry. One of our major strengths is our vertically integrated manufacturing strategy which allows us to precisely control the quality of our supply chain and optimise efficiencies so that you can be confident in the origin, integrity and reliability of our products.

### Our manufacturing capabilities include:

Investment Casting, Pressing, Forging, Plasma & Laser Cutting, Manual & CNC Milling and Turning, Manual, Robotic & Seam Welding, CNC Sawing, Tooling Manufacture, General Fabrication & Assembly, Shot Blasting & Electro Polishing.

### Our specialist capabilities include:

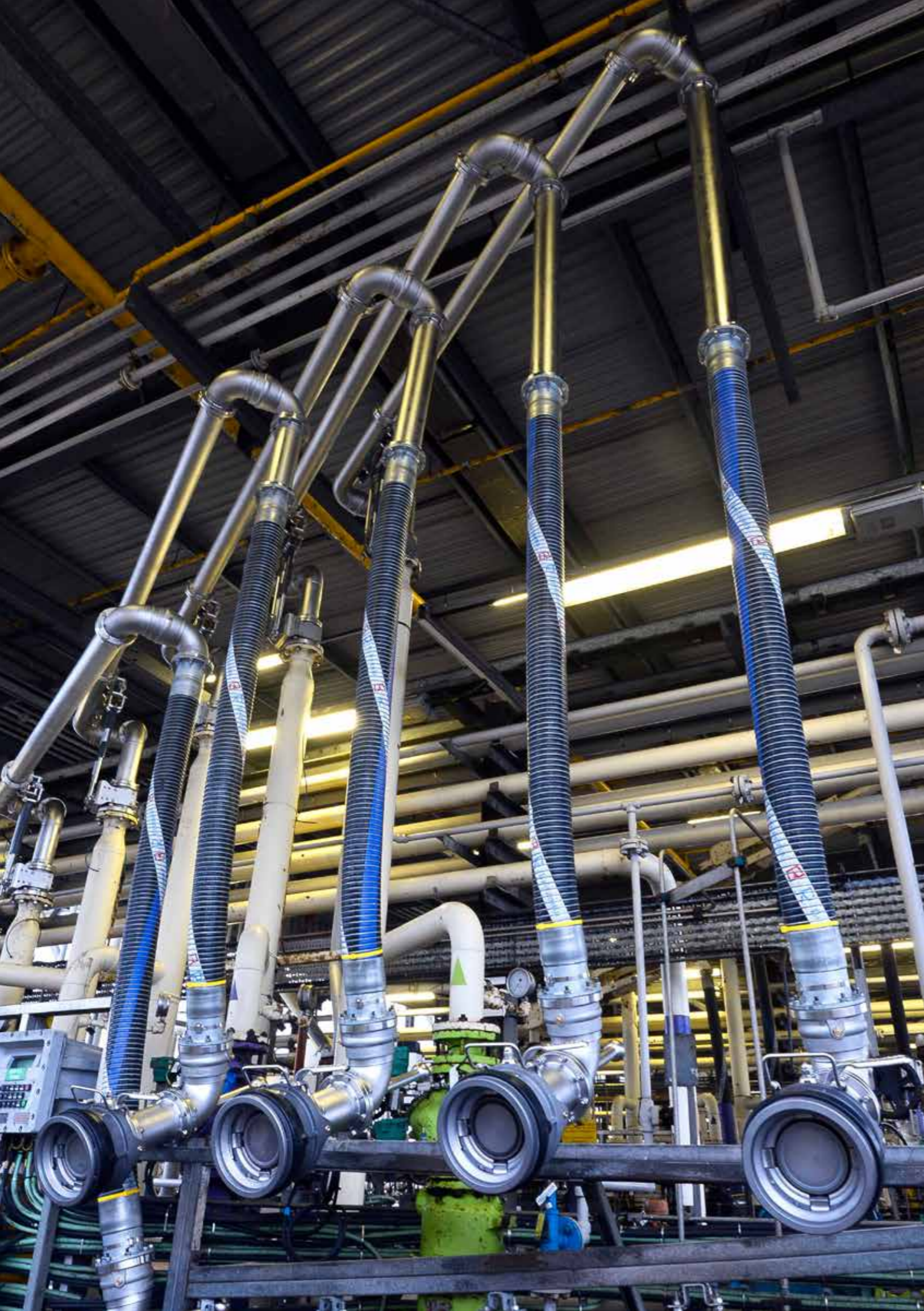
Advanced design and rapid prototyping, Research and Development facility, 3rd Party Approved Test Laboratory, Oxygen Clean Room.



*'I have been in the industry for almost 20 years and I can honestly say that the Fort Vale coupler is the best API loading coupler we have ever used. I have used many different types but this one beats them all.'*

**Scott Reiber, Holly Energy**





# Products

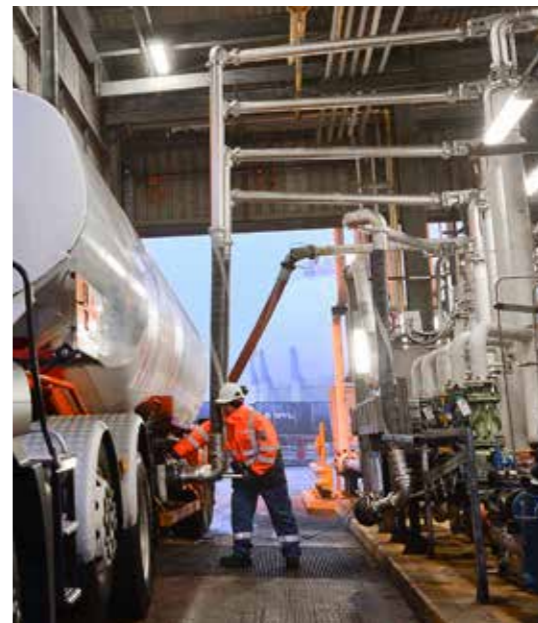
Fort Vale has an embedded culture of quality, design excellence and safety.

We understand the rigours of the relentless service required in the road loading terminal environment. Our products are robust, reliable and have been extensively tested in excess of industry requirements to ensure that they are hard working, long lasting and low maintenance.

## Safeload loading arms

A stainless steel base swivel eliminates corrosion and a dual needle/ball race bearing with specialist high-resistance seals ensures a durable fuel delivery system that gives enhanced performance and requires minimum servicing.

Our loading arm features an integral earth system that provides electrical continuity without separate wiring and a safety device to prevent over-rotation. With industry-standard connections, it can be configured to suit top, bottom, left or right orientation for maximum flexibility.



*'We have been trialling the Fort Vale API coupler for a couple of months now and are so impressed with its performance that we have decided to standardise its use across our terminals.'*

**Kevin Canaday, JP Energy**





## Products

### Safeload API bottom loading couplers

Our unique design "wrap around" latches cover over 50% of the truck adaptor face. This improves the security of connection and reduces wear to the adaptor and the coupler, prolonging the life of both components. Easy to use, simple to maintain and with a 3 Year Warranty on all metal parts\* to give you peace of mind and lower your M&R costs.

- Semi-automatic (6 Bar MAWP) – our "standard"
- High-pressure (10 Bar MAWP, 16 Bar MAWP closed/disconnected)
- Manual – for skids and installations with lower throughput

(\*under standard environmental conditions – [www.fortvale.com/FVETCOFSALE.pdf](http://www.fortvale.com/FVETCOFSALE.pdf) - para 9)



*'These couplers are used consistently on a daily basis with millions of litres of Hydrocarbon Fuel running through them. The couplers are very robust, efficient, driver friendly and easy to operate.'*

**Alex Macrae, Petroineos Grangemouth**



## Services

Fort Vale offers an in-house refurbishment service for its entire range of products. We can supply additional technical support to customers wishing to undertake maintenance at their own premises in the form of:

- Proprietary maintenance tools
- Step-by-step maintenance manual with colour photographs
- Gauging equipment for Safe Working Practice: Truck adaptor wear gauge (which became mandatory in 2006 as part of the vehicle Safe Loading Pass – [UK Law Only] )



## Global Reach

Our subsidiaries are located in:

**USA** - Houston

**Netherlands** - Rotterdam

**Russia** - Moscow

**China** - Shanghai

**Singapore** - Jurong East

**Australia** - Brisbane

We also have Authorised Distribution Partners strategically appointed around the world to provide you with product sales and after-market services.

**Please visit our website for up to date contact information - [www.fortvale.com](http://www.fortvale.com)**





Calder Vale Park  
Simonstone Lane  
Simonstone  
Burnley  
Lancashire  
BB12 7ND  
UK

Tel: +44 (0) 1282 687120  
Fax: +44 (0) 1282 687110  
Email: [sales@fortvale.com](mailto:sales@fortvale.com)  
Web: [www.fortvale.com](http://www.fortvale.com)



**FORT VALE**